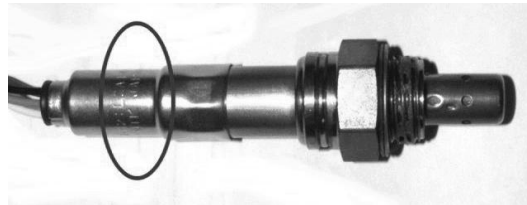


## O<sub>2</sub> Sensor Type

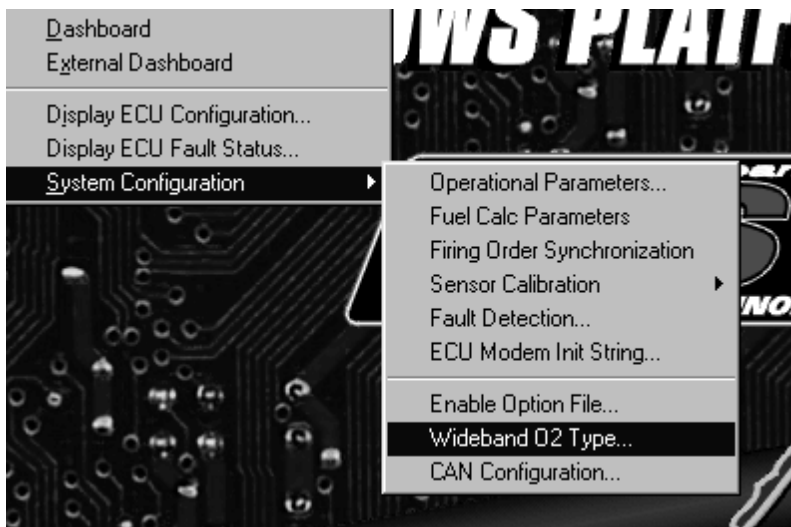
Thank you for choosing FAST<sup>™</sup> products; we are proud to be your manufacturer of choice. Please read this instruction sheet carefully before beginning installation, and also take a moment to review the included limited warranty information.

The FAST<sup>™</sup> XFI<sup>™</sup> ECU is compatible with different models of wide-band oxygen sensors when used with C-Com XFI<sup>™</sup> Software V1.310 (and firmware 45) or later. Earlier versions of software were compatible with “L1H1” or “L2H2” sensors. V1.310 adds compatibility with “LHA” sensors. The model number is stamped into the body of the sensor.



### Software Setup

There is a setting in the C-Com XFI<sup>™</sup> Software that tells the ECU which type of sensor is being used. This setting is stored in the ECU independently of the tuning file so it does not need to be set or verified each time a new tuning file is loaded. However, it does need to be verified before using an ECU for the first time or whenever the O<sub>2</sub> sensor is changed. While online with the ECU, select VIEW/SYSTEM CONFIGURATION/WIDEBAND O<sub>2</sub> TYPE –this will bring up a window where the appropriate sensor type can be selected.



**NOTE:** An incorrect “O<sub>2</sub> Sensor Type” setting can cause erroneous O<sub>2</sub> readings. If tuning is performed or closed loop fuel corrections are made based on erroneous O<sub>2</sub> readings, the engine may run richer or leaner than intended and engine damage could result.

**FAST™**  
**LIMITED LIFETIME WARRANTY AND LIMITED WARRANTY**

FAST™ warrants that its EZ-EFI™ products are free from defects in material and workmanship for the lifetime of the product. This **Limited Lifetime Warranty** shall cover **only** the original purchaser. All other FAST™ products are covered by a **Limited Warranty** which covers defects in material and workmanship for a period of **one year** from the date of purchase.

**FAST's obligation under this warranty is limited to the repair or replacement of its product.** To make a warranty claim, the part must be returned directly to FAST™ at the address listed below with a valid Return Merchant Authorization Number (RMA), freight prepaid. Items covered under warranty will be returned to you freight collect. To obtain an RMA, call 877-334-8355 to report the issue you are experiencing. At that time, FAST™ will attempt to trouble shoot your issue.

**It is the responsibility of the installer to ensure that all of the components are correct before installation. We assume no liability for any errors made in tolerances, component selection or installation.**

**There is absolutely no warranty on the following:**

- A. Any parts used in racing applications or subject to excessive wear;**
- B. Any product used in marine applications, unless that product is listed by FAST™ as a specific marine product;**
- C. Any product that has been physically altered improperly installed or maintained;**
- D. Any product used in improper applications, abused, or not used in conjunction with the proper parts.**

**There are no implied warranties of merchantability or fitness for a particular purpose.** There are no warranties which extend beyond the description of the face hereof. **FAST™ will not be responsible for incidental and consequential damages, property damage or personal injury damages.** Where required by law, implied warranties or merchantability and fitness are limited to terms outline above.

This warranty gives you specific legal rights and you may also have other legal rights which vary from state to state.



FAST™  
3400 Democrat Rd.  
Memphis, TN 38118  
Phone: (901) 260-3278 Fax: (901) 375-3408  
www.fuelairspark.com

**Part #FAST4-110**  
**Revised 11/13/12**